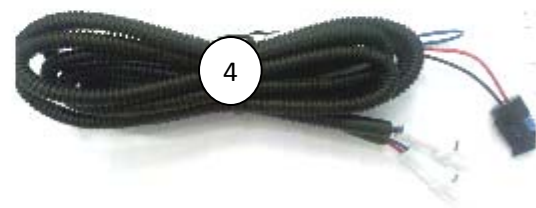
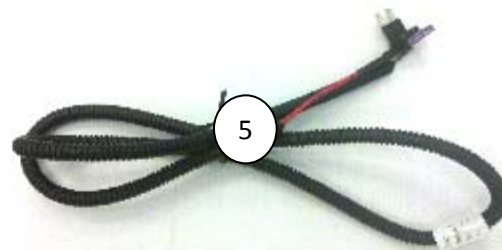


**Honda Civic DRL KIT**  
**2011-UP**  
**Part Number: 260-1022-HN2**



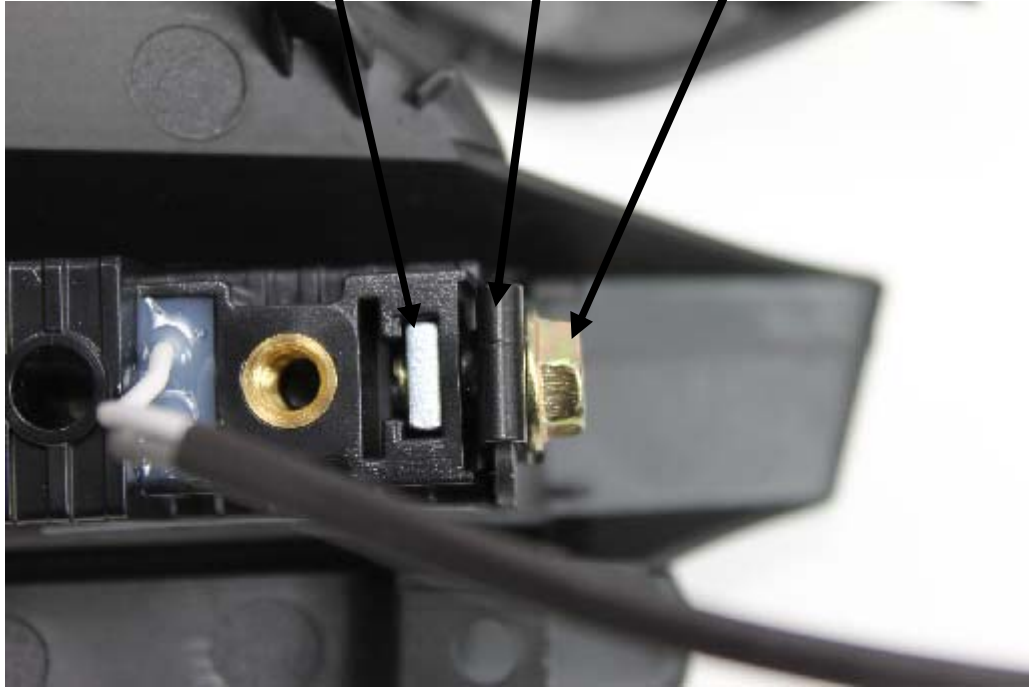
Kit Contents

Item #	Qty.	Description
1	1	Controller
2	2	DRLs
3	2	Bezels L, R
4	1	DRL Extension
5	1	Ignition Harness
6	1	Illumination
7	1	Ground Harness
8	3	Sack parts



**CAUTION:** It is advisable to disconnect the negative battery cable for 3 minutes before beginning installation, to avoid unintended airbag deployment. Note and record any antitheft radio codes prior to disconnecting.

Assemble DRLs to bezels as shown.





There is a 6mm screw (10 mm wrench) behind the bezel here. Access this screw from under the bumper by pulling down the panel underneath.

First, remove the clips from under the bumper and pull down front edge of the panel to gain access to the screw on the back of the fog light bezel.

Second, remove 6mm screw (10 mm wrench) behind the bezel.

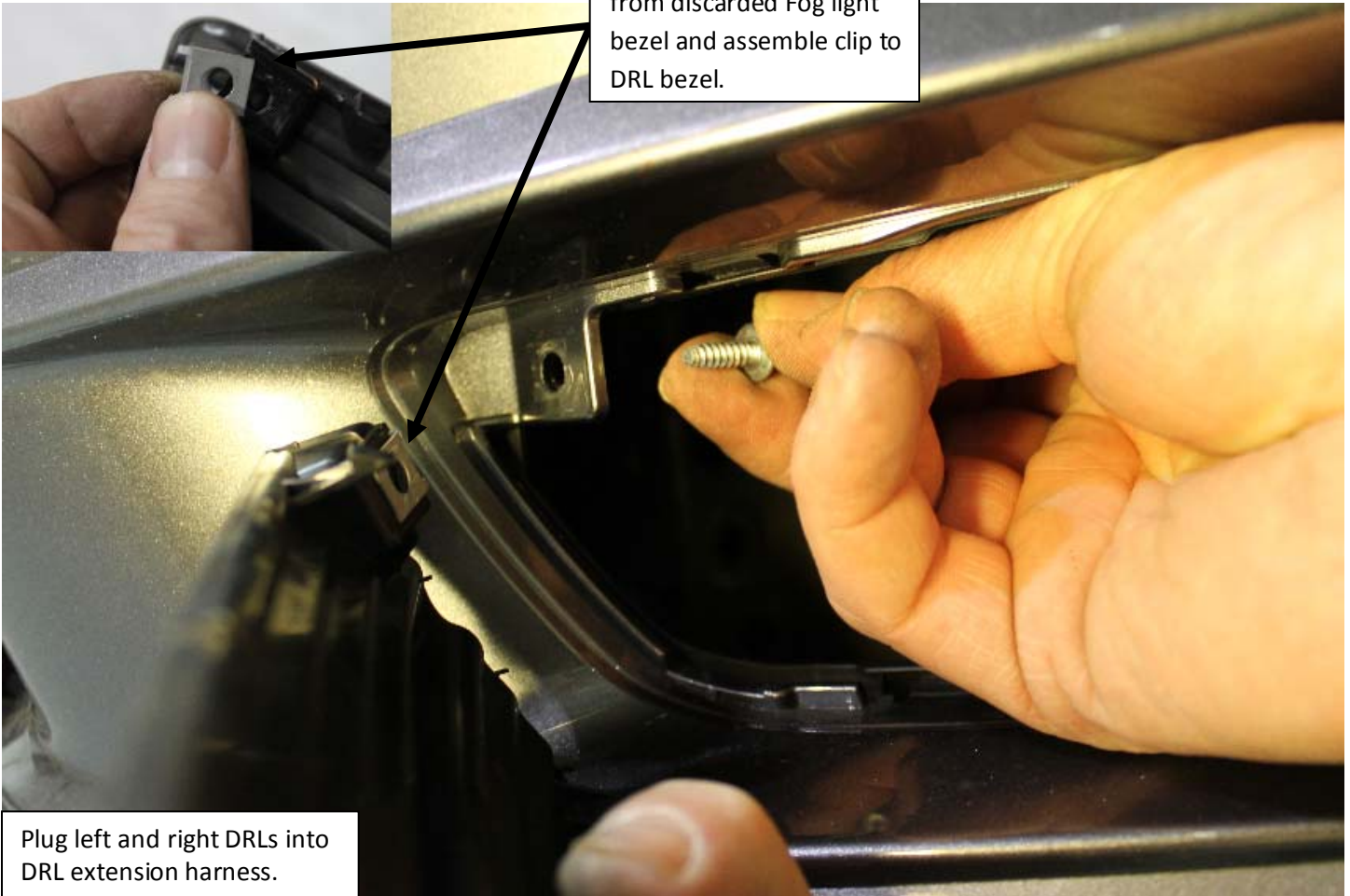


Third, place a trim tool between the outer edge of the bezel and the bumper and push towards the middle of the car, popping out the bezel from the bumper.

Route DRL extension harness behind bumper to bezel holes for install to DRLs.



Remove threaded clip from discarded Fog light bezel and assemble clip to DRL bezel.



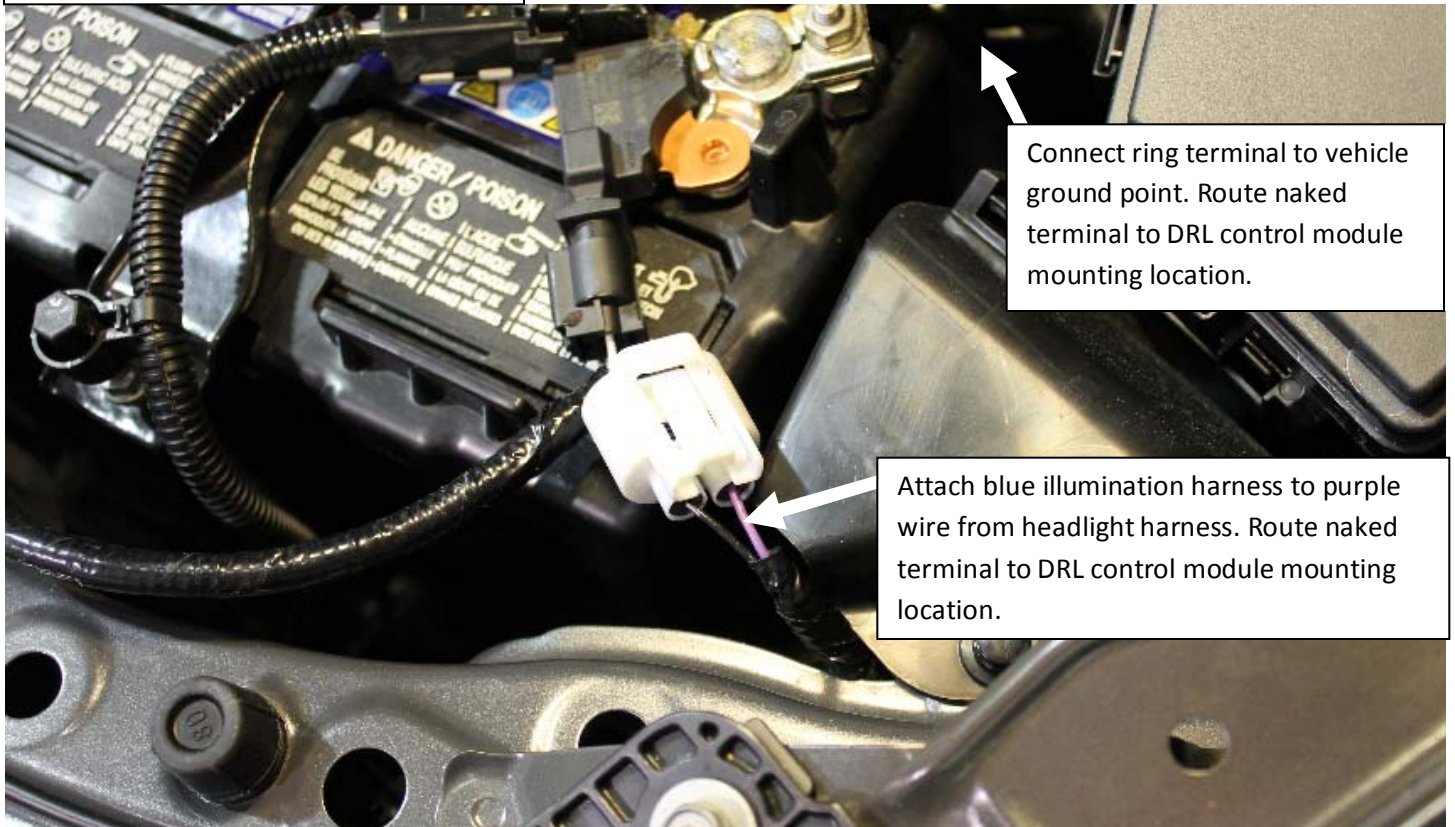
Plug left and right DRLs into DRL extension harness.

Part Number: 260-1022-HN2

Choose a mounting location for the DRL control module where all wiring will reach and all connections may be made. Be sure to choose a surface suitable for using the double-sided body mold tape to mount the DRL control module. (Route all wiring to this location)

Trim the double-sided body mold tape to the shape of the DRL control module.

Thoroughly clean the surface of the DRL control module with Isopropyl alcohol or suitable cleaning agent. Allow to dry. Firmly press the double-sided body mold tape to the DRL control module surface and apply continuous pressure for 5 minutes.

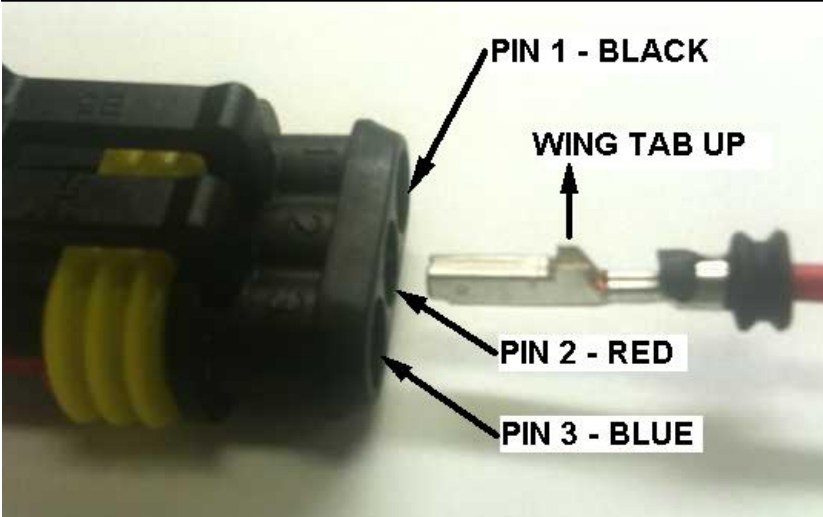


Connect ring terminal to vehicle ground point. Route naked terminal to DRL control module mounting location.

Attach blue illumination harness to purple wire from headlight harness. Route naked terminal to DRL control module mounting location.



Run ignition harness through firewall to fuse panel inside of car. Depending on vehicle and location of chosen fuse, you may have to extend the harness wire using blue extension wire and terminals provided in kit. Remove the mini fuse from ignition power fuse location and place in the open slot of the ignition power fuse adaptor. Insert ignition power fuse adaptor into ignition power fuse location. Route naked terminal to DRL control module mounting location.



PIN	COLOR	FUNCTION
1	BLACK	GROUND
2	RED	IGNITION
3	BLUE	ILLUMINATION

Insert the terminals from the ignition power fuse harness, the ground harness and the illumination harness into the blank connector provided as shown above. Be sure to pay attention to the orientation of the terminals prior to insertion. Be sure to insert the terminals into the correct cavity. Push the wires into the proper locations until you hear and feel a click. Gently pull on the wire to make sure the terminal has properly seated. Slide the red terminal lock into place to secure the terminals.

## **Testing**

Reconnect the battery and test the system before mounting the control module and replacing all panels in the event of errant installation.

To test the system, turn the ignition switch to run and check that the DRL lights are on. Then turn on head lights and check that running lights dim. If either does not occur, test for voltages at the module, confirm ground and retest.

## **Re-Assembly**

Permanently mount the DRL control module. Thoroughly clean the surface of the mounting location with Isopropyl alcohol or suitable cleaning agent. Allow to dry. Firmly press the double-sided body mold tape to the mounting surface and apply continuous pressure for 5 minutes.

Re assemble vehicle in reverse order of disassembly.